




MERCURY
DEVELOPMENT

FOR LEASE
RETAIL SPACE



Sherwood Plaza  16260 SW Langer Dr, Sherwood, OR 97140, USA

Property Details

Available Units:	2
Total Units:	24
Gross Leasable Area:	82,960 SF
Parking Spaces:	416

Contact

Leasing Agent:	Timothy Dougherty, CLS
Office:	503-212-4617
Email:	tdougherty@mercurydev.com

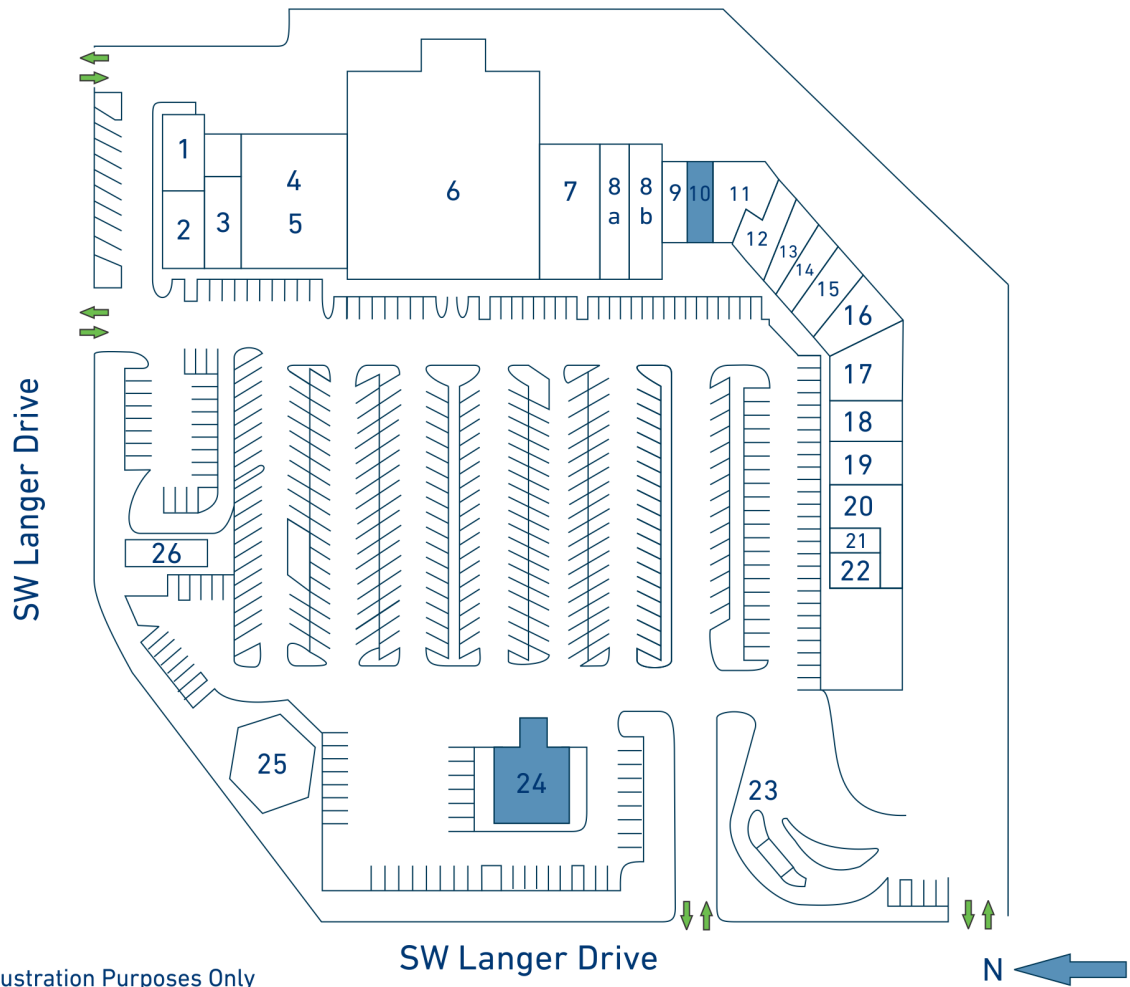
Features

This neighborhood strip center is situated in the heart of Sherwood's retail corridor and greatly benefits from both unobstructed visibility and direct access via HWY 99W (est. 50,000 passing vehicles per/day). Sherwood Plaza is anchored by Ross Dress for Less and derives daily traffic from an assortment of strong national, regional, and local tenants such as Dollar Tree, Taco Bell, Papa Murphy's, Subway, US Post Office, Dutch Brothers, Shari's, and Mudpuddles Toys and Books. Sharing the market with strong national anchors such as Safeway, Target, and Walmart, Sherwood Plaza looks forward to its continual pursuit of fulfilling the community's retail needs.

Demographics

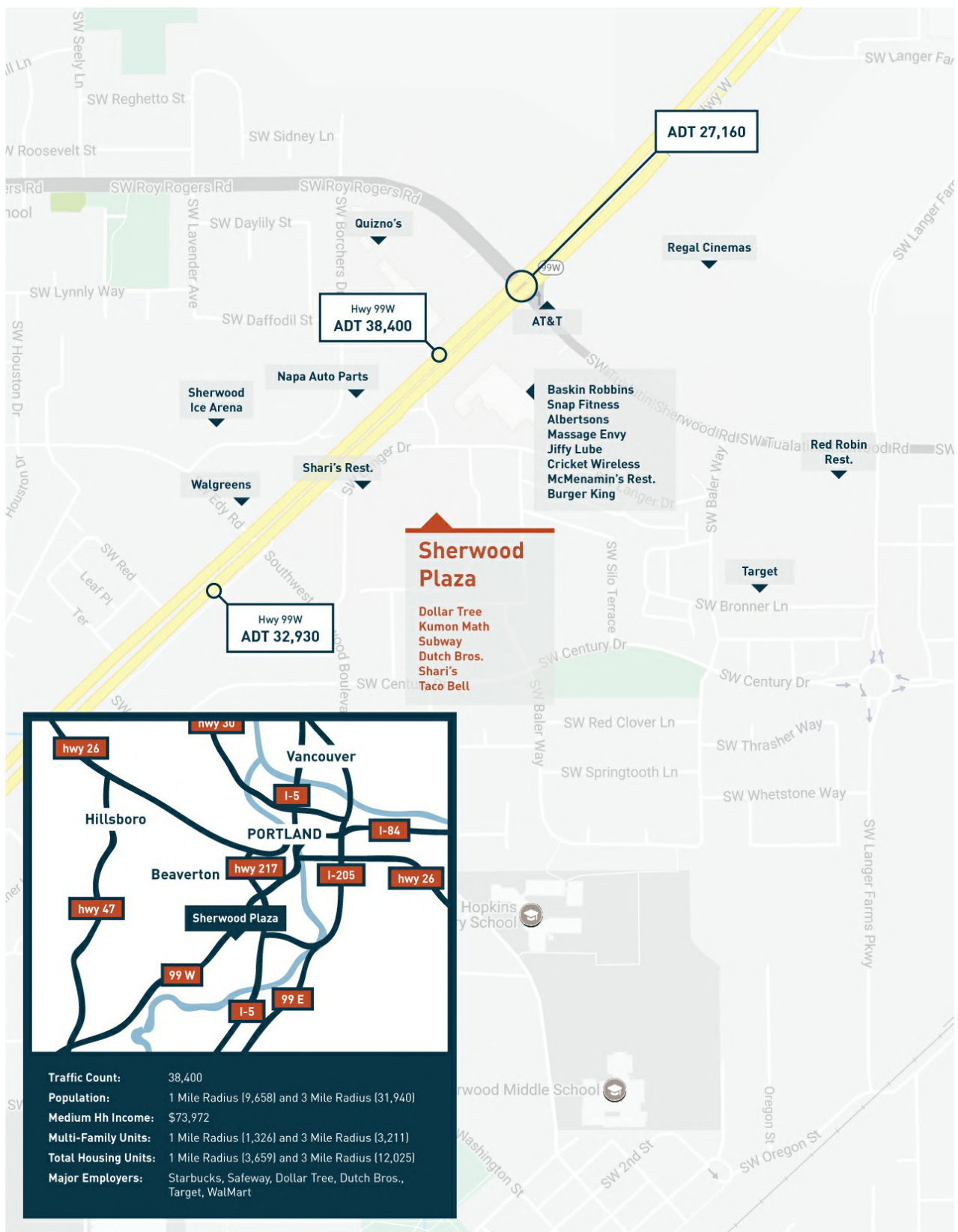
Demographics	1 mile	3 miles	5 miles
Population	10,521	34,162	115,436
Total Housing Units	3,890	12,344	44,433
Median Hh Income	\$83,232	\$90,448	\$84,491
Total Employees	4,578	14,119	49,646
College Educated	20%	16%	16%

Site Map



1 The Grill Center	9 Komo Sushi	17,18 MudPuddles Toys & Books
2 Papa Murphy's Pizza	10 Unit Available (1,200 SF)	19 Subway
3 Icon Nails	11 Sherwood Liquor Store	20 McKenzie Pub
4,5 Dollar Tree	12 Antique Barbershop	21,22 Oregon Hearing Solutions
6 Ross Dress for Less	13 Chinese Panda Restaurant	23 Dutch Bros. Coffee
7 U.S. Post Office	14 Wash Tub Laundromat	24 Unit Available (3,336 SF)
8A BenchMark Phys Therapy	15 Day & Associates Insurance	25 Shari's Family Restaurant
8B AMT Electronics	16 Musa Taekwondo	26 Taco Bell

Trade Map





Sherwood Plaza - Unit 10



Unit 10  16340 SW Langer Dr., Sherwood, OR 97140

Unit Details

Square Footage:	1,200 SF
Dimensions:	N/A
Rate:	Call For Details
Date of Availability:	Currently Available

Contact

Leasing Agent:	Timothy Dougherty, CLS
Office:	503-212-4617
Email:	tdougherty@mercurydev.com

Features

- Retail space in high foot foot traffic location.
- Rare size/dimensions with ample glass frontage.
- Partitions include an open sales floor, storage/break room, and a restroom.
- Storefront faces the main entrance of the shopping center.
- Rear door providing access for loading and employee parking.

Unit 10 - Photos



Sherwood Plaza - Unit 24



Unit 24  16390 SW Langer Dr., Sherwood, OR 97140

Unit Details

Square Footage:	3,336 SF / 20,066 SF PAD
Dimensions:	158' x 127' PAD
Rate:	Call For Details
Date of Availability:	Currently Available

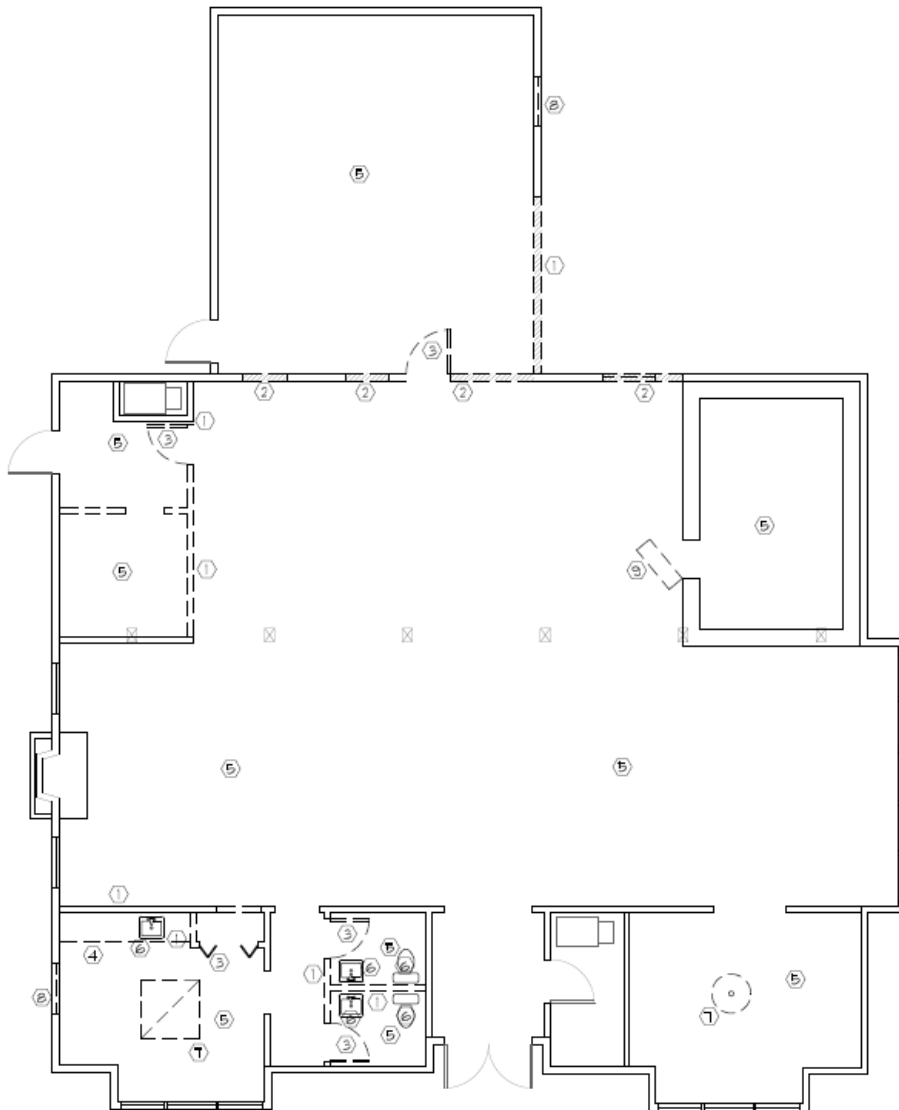
Contact

Leasing Agent:	Timothy Dougherty, CLS
Office:	503-925-1850 ext. 300
Email:	tdougherty@mercurydev.com

Features

- Permitted for drive-thru operators.
- Leasing Options: existing building, build-to-suit, or ground lease.
- Highly visible pad/building with great exposure to HWY 99W and Langer Dr.
- Current building has \$120,000+ in SDC/TDT credits with the City of Sherwood that the next tenant can apply towards their buildout's municipality fees.
- The next tenant may re-activate a 10'x10'+ LED pylon sign that will exclusively serve the existing building/pad.

Unit 24 - Floor Plan



1. PROPOSED DEMO PLAN
SCALE: 1/4" = 1'-0"

DEMO NOTES	
①	REMOVE EXISTING PARTITION WALL
②	REMOVE EXISTING PARTITION WALL
③	REMOVE EXISTING PARTITION WALL
④	REMOVE EXISTING PARTITION WALL
⑤	REMOVE EXISTING PARTITION WALL
⑥	REMOVE EXISTING PARTITION WALL
⑦	REMOVE EXISTING PARTITION WALL
⑧	REMOVE EXISTING PARTITION WALL
⑨	REMOVE EXISTING PARTITION WALL

• STRUCTURAL ELEMENTS TO REMAIN UNLESS INDICATED
• ALL DEMOS TO BE COMPLETED PRIOR TO DEMOLITION
• DEMO TO BE COMPLETED BY 10/15/2024

Unit 24 - Photos

