

Property Details

- Available Units:** 1
- Total Units:** 18
- Gross Leasable Area:** 42,164 SF
- Parking Spaces:** 178

Contact

- Leasing Agent:** Timothy Dougherty, CLS
- Office:** 503-212-4617
- Email:** tdougherty@mercurydev.com

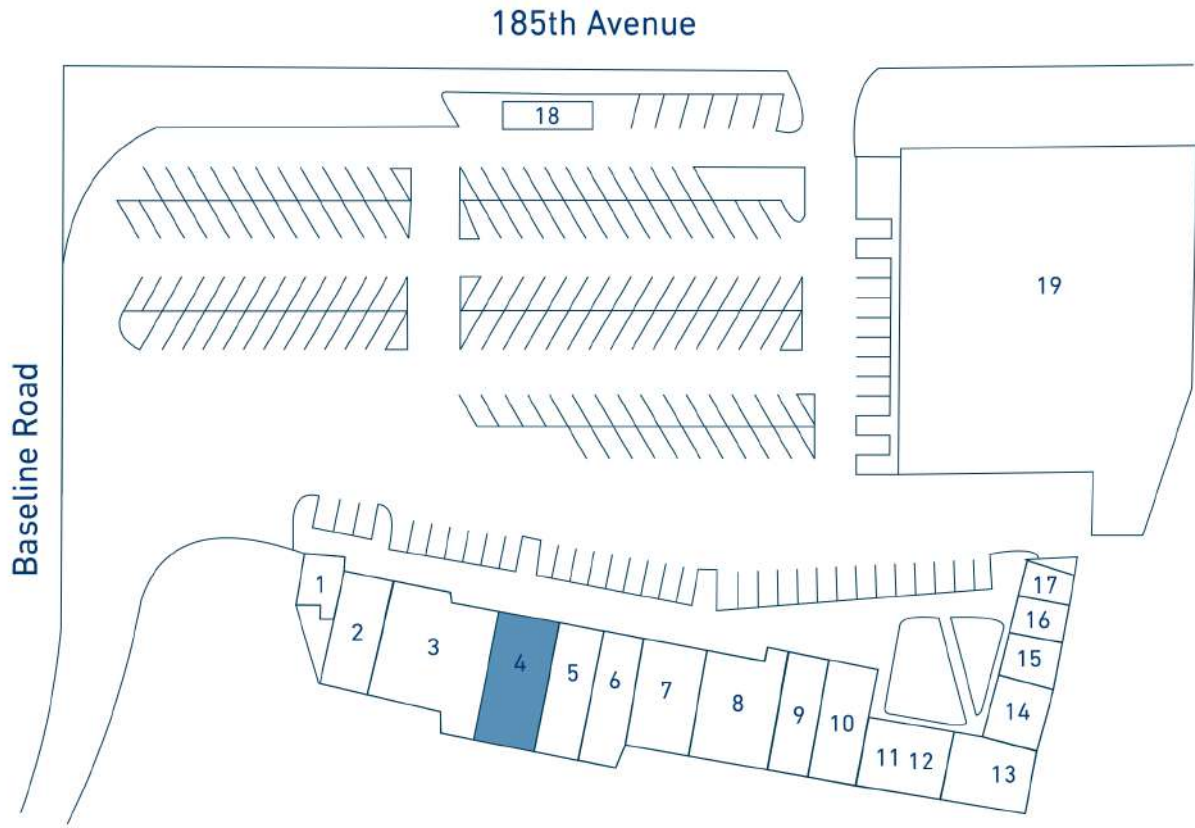
Features

Located at the busy intersection of 185th and Baseline and anchored by Goodwill, Baseline Shopping Center provides Hillsboro, Beaverton, and Aloha with an assortment of retail opportunities. Tenants enjoy over 40,000 passing vehicles per day accompanied by a Max public transportation stop/shelter on the property’s sidewalk near both its entrances. Driven by the successes of close corporate headquarters such as Reser’s Fine Foods, Intel, Yahoo, Costco, and Nike, Baseline Shopping Center will remain an integral retail provider for surrounding communities and local businesses.

Demographics

DEMOGRAPHICS	1 mile	3 miles	5 miles
Population	21,227	155,100	308,346
Median Hh Income	\$60,286	\$63,917	\$69,189
Total Housing Units	8,077	62,651	121,812
College Educated	18%	17%	18%
Total Employees	1,788	77,353	133,476

Site Map

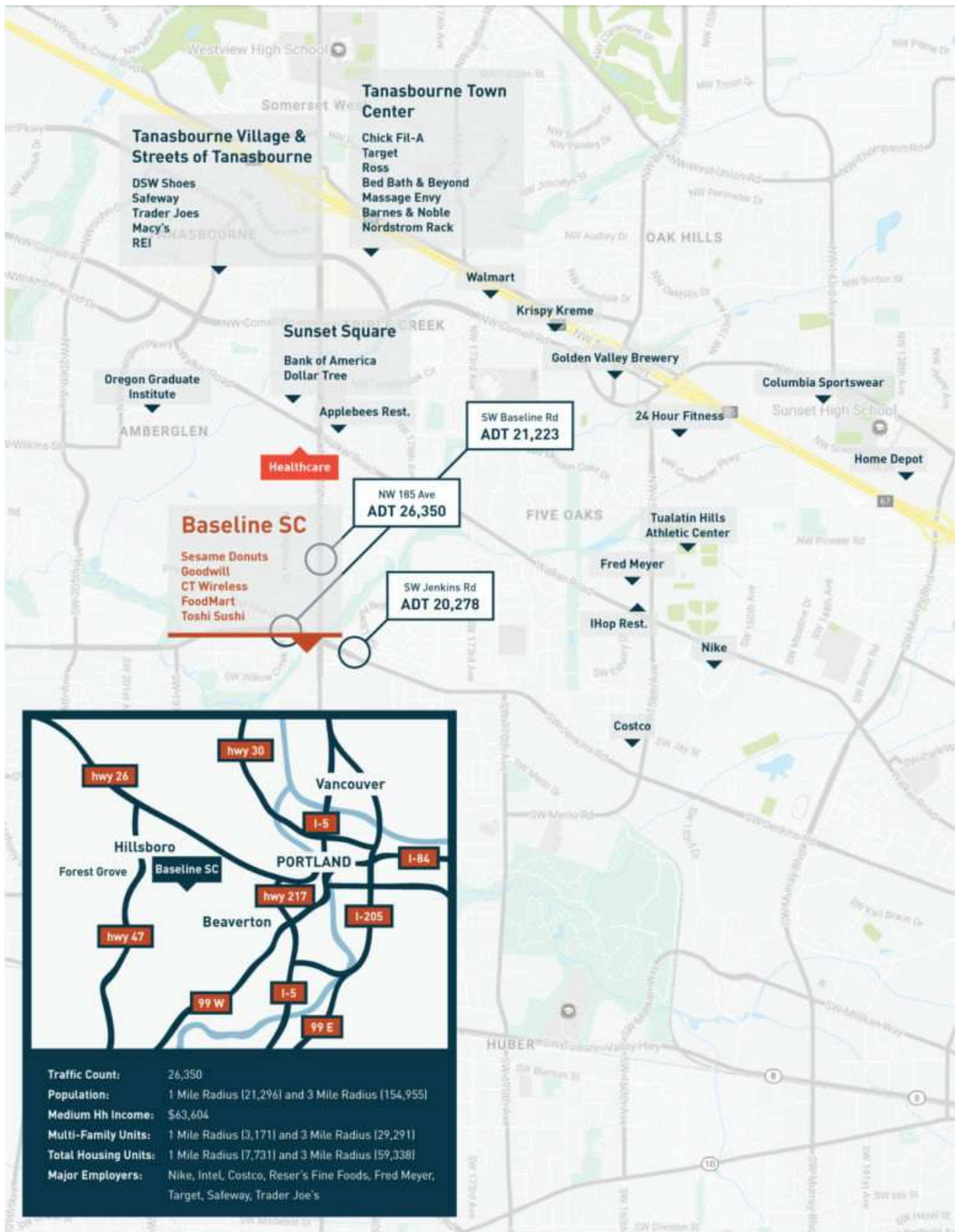


For Illustration Purposes Only



1	Hairdo USA	7	Maxwells Pub and Grill	14	Tattoo 42
2	Sesame Donuts	8	Richard's Deli	15	Herbalife
3	#1 Food Mart	9	Baan Thai Restaurant	16	Brainwave PC
4	Unit Available (1,432 SF)	10	Toshi Sushi	17	1 Stop Card Shop
5	Pho Hoai Restaurant	11,12	U.S. West Coast Taekwondo	18	Black Rock Coffee
6	H & R Block	13	U Need Asian Market	19	Goodwill

Trade Map



 Photos



Baseline - Unit 4



Unit 4  731 SW 185th Ave, Aloha, OR 97006

Unit Details

Square Footage:	1,432 SF
Dimensions:	N/A
Rate:	Call For Details
Date of Availability:	Currently Available

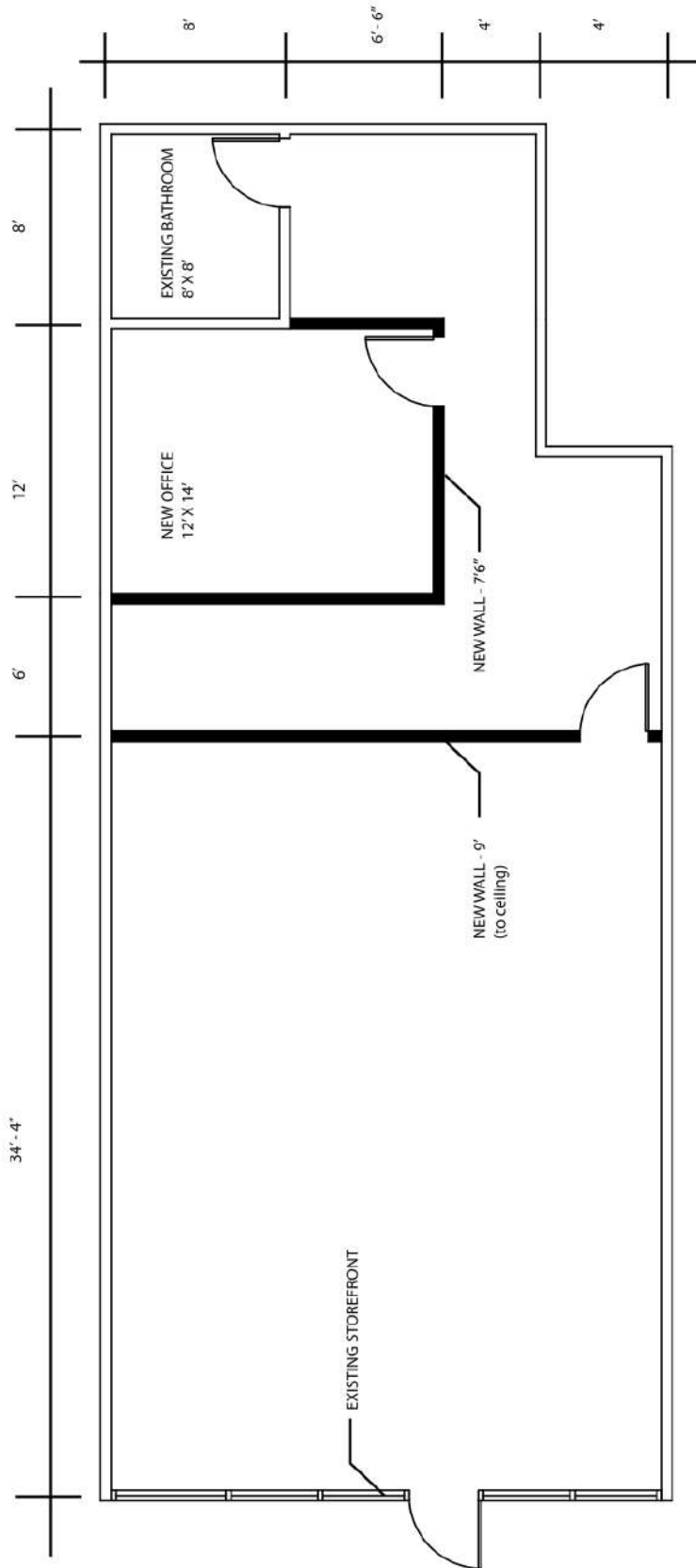
Contact

Leasing Agent:	Timothy Dougherty, CLS
Office:	503-212-4617
Email:	tdougherty@mercurydev.com

Features

- Previously occupied by Boost Mobile, their improvements remain.
- Open sales floor, rear partition for stock/storage, one private office, one ADA restroom.
- Storefront has direct site lines from the signalized intersection of 185th and Baseline Road.
- Rare size/dimensions with great glass frontage.

Unit 4 - Floor Plan



FLOOR PLAN

731 SW185TH AVE., ALOHA, OR, 97003

DRAFT - NOT FOR CONSTRUCTION

SUITE #131

Unit 4 - Photos

