

Property Details

Available Units: 2
Total Units: 19
Gross Leasable Area: 116,774 SF
Parking Spaces: 507

Contact

Leasing Agent: Timothy Dougherty, CLS
Office: 503-925-1850 ext. 300
Email: tdougherty@mercurydev.com

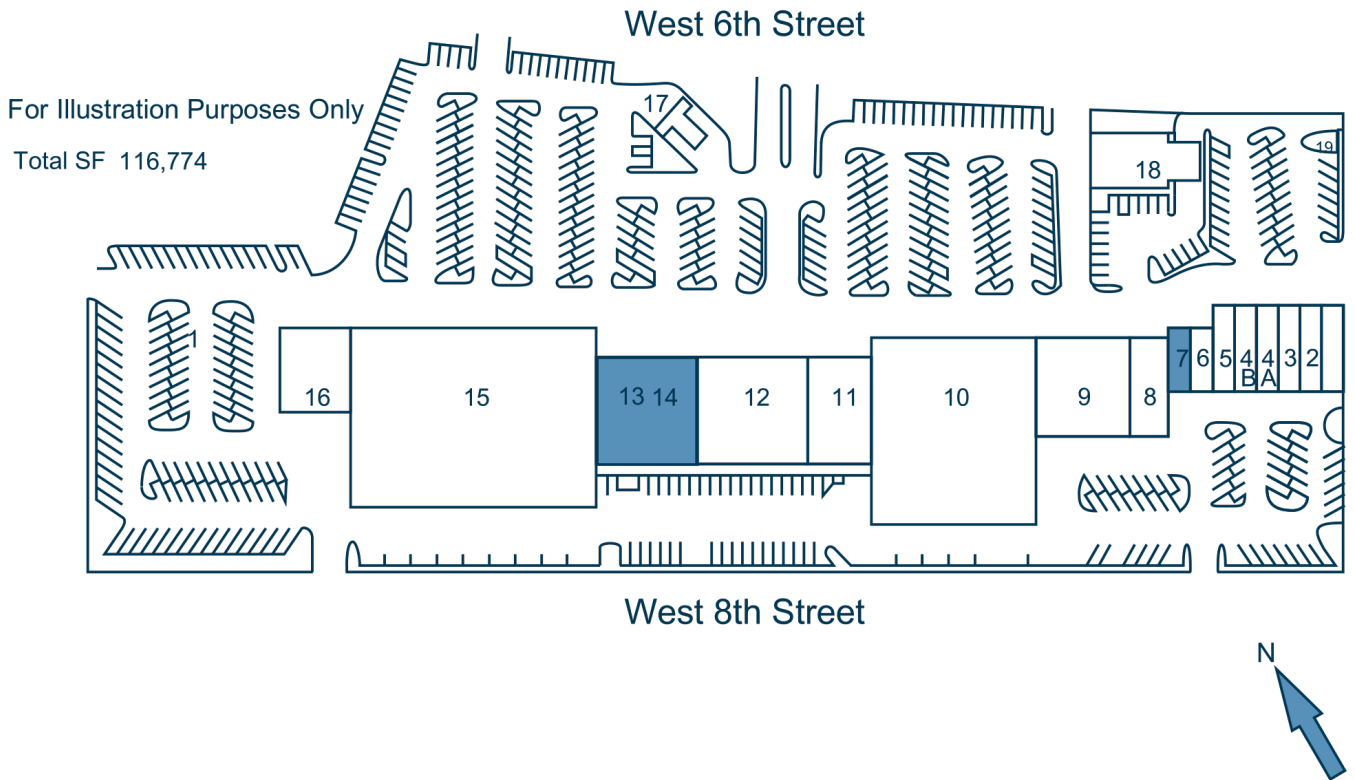
Features

Cascade Square Shopping Center is located in the retail hub of The Dalles, Oregon on West 6th Street. The Cascade Square will have a \$4 Million dollar major renovation completed in 2017, which will modernize the Center. Tenants such as Rite Aid, Grocery Outlet, Jo-Ann Fabrics & Crafts, Kobe Sushi and the Dollar Tree benefit from nearly 16,000 vehicles passing daily. Utilizing a great tenant mix, enhanced by shadow anchors such as Goodwill, Fred Meyer, and Safeway, Cascade Square Shopping Center will continue to offer tenants great retail exposure on The Dalles busiest intersection.

Demographics

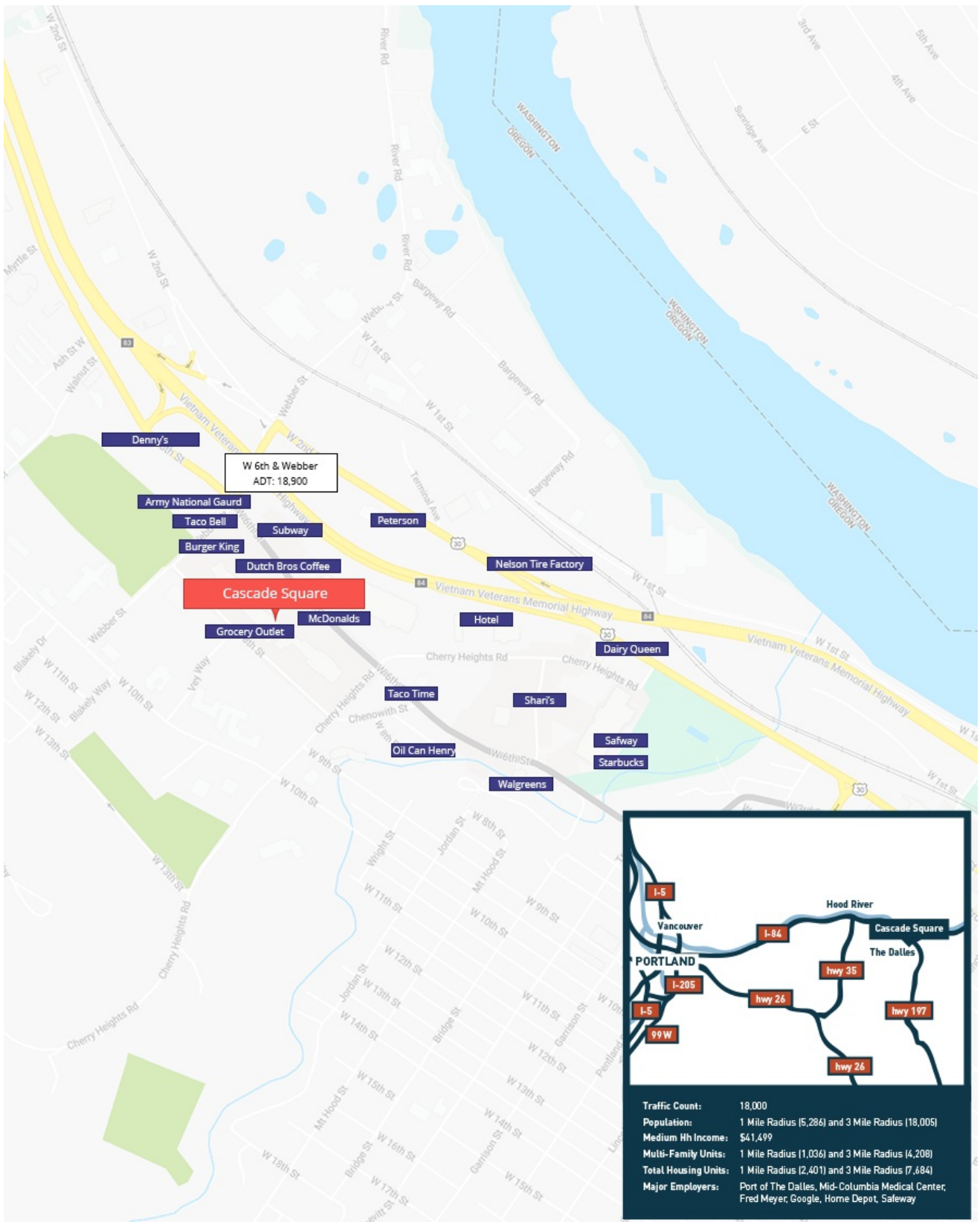
DEMOGRAPHICS	1 mile	3 mile	5 miles
Population	5,366	18,004	20,701
Median HH Income	\$37,174	\$41,482	\$42,692
Median Age	40.1	40.5	41.1
Total Housing Units	2,351	7,683	8,826
College Educated	11%	8%	8%
Total Employees	3,490	9,839	11,036

Site Map



1	Pizza Hut	7	Unit Available (1,000 SF)	15	Rite Aid
2	Sally Beauty	8	Wash N' Shop	16	Rent-A-Center
3	AT&T	9	Dollar Tree	17	Dutch Bros. Coffee
4A	Kobe Hibachi Sushi	10	Grocery Outlet	18	Rivermark Credit Union
4B	OneMain Financial	11	Maurices	19	Wells Fargo ATM
5	Perfect Look	12	Jo-Ann Fabrics & Crafts		
6	C.T. Nails	13,14	Unit Available (8,000 SF)		

Trade Map



 Photos



Cascade Square - Unit 7



Unit 7



1400 W 6th St, The Dalles, OR 97058

Unit Details

Square Footage:	1,000 SF
Dimensions:	N/A
Rate:	Call For Details
Date of Availability:	Current

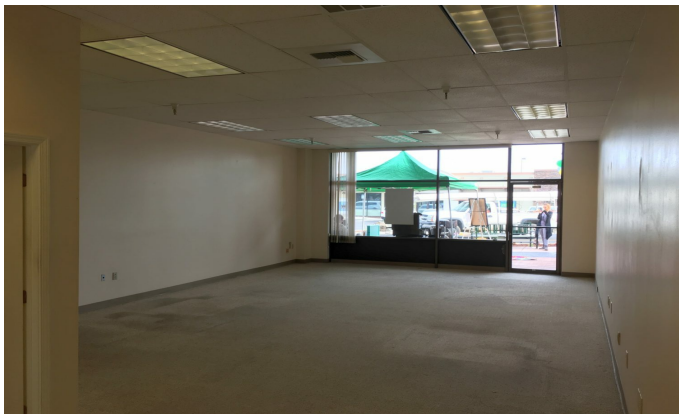
Contact

Leasing Agent:	Tim Dougherty, CLS
Office:	503-925-1850 ext. 300
Email:	tdougherty@mercurydev.com

Features


- Currently Available
- 2017 Currently built out as a professional office.
- Highly visible sign band facing the very busy W. 6th Street.
- Storefront faces the main entrance of the shopping center.
- Hard to find size/shape.
- Pylon signage available.

Unit 7 - Photos



Cascade Square - Unit 13/14



Unit 13/14  1332 W 6th St, The Dalles, OR 97058

Unit Details

Square Footage:	8,000 SF
Dimensions:	N/A
Rate:	Call For Details
Date of Availability:	Currently Available

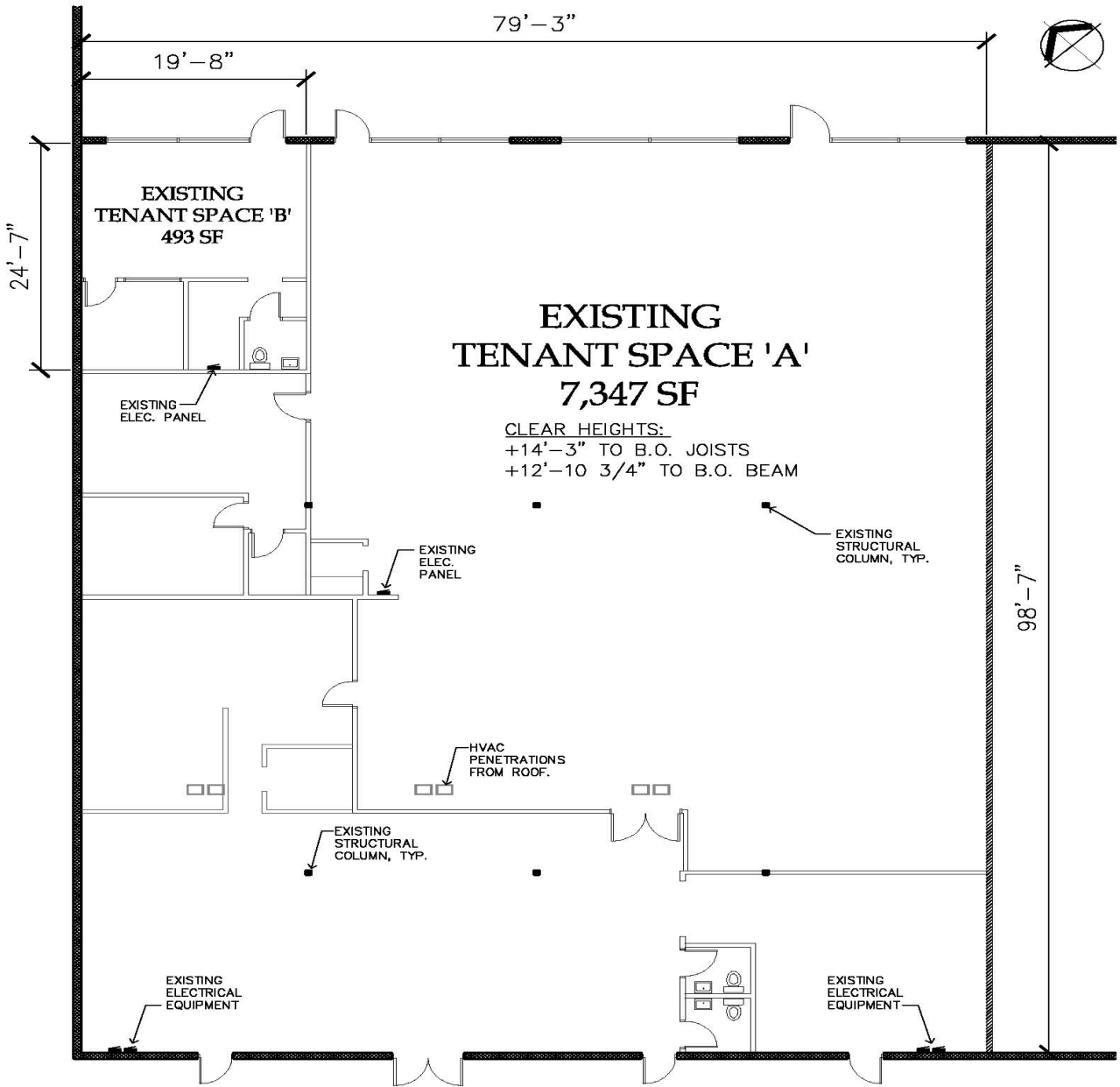
Features

- Available October 1st, 2017.
- Post-remodel junior anchor unit.
- Class A demarcated storefront – the shopping center was fully remodeled in 2017.
- Rear door for loading.
- Pylon signage available.

Contact

Leasing Agent:	Timothy Dougherty, CLS
Office:	503-925-1850 ext. 300
Email:	tdougherty@mercurydev.com

Unit 13/14 - Floor Plan



FLOOR PLAN
NOT TO SCALE

Unit 13/14 - Photos

